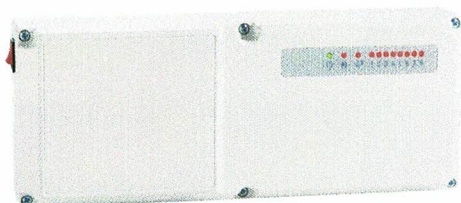


ALCD08M02



**8 CHANNELS WIRING BOX
PUMP AND BOILER CONTROL 230V-24V**

Electronic control for floor heating systems, with 230V~ power supply. The control offers the possibility to connect up to 8 channels, with a thermostat (24V~) and up to 5 actuators (24V~) each. Pump output with fixed delay time of 2.5 minutes, boiler control output and input for an external clock for the activation of the section of the actuators and thermostats.

TECHNICAL FEATURES

Power supply	230V~ ±10% 50Hz
Power absorption	According to the loads rating
Illuminated switch	On/Off
IP protection	IP44
Pump output	230V~
Boiler interlock output	Voltage free contact
Thermostats/actuators outputs	24V~
Time prog. output (optional)	24V~
Contacts rating: Pump	5A@250V~ SPST
Contacts rating: Boiler interlock	5A@250V~ SPST
Maximum applicable load:	
Actuators and thermostats	1A each channel 2A total
Dimensions	H125 W320 D67mm

